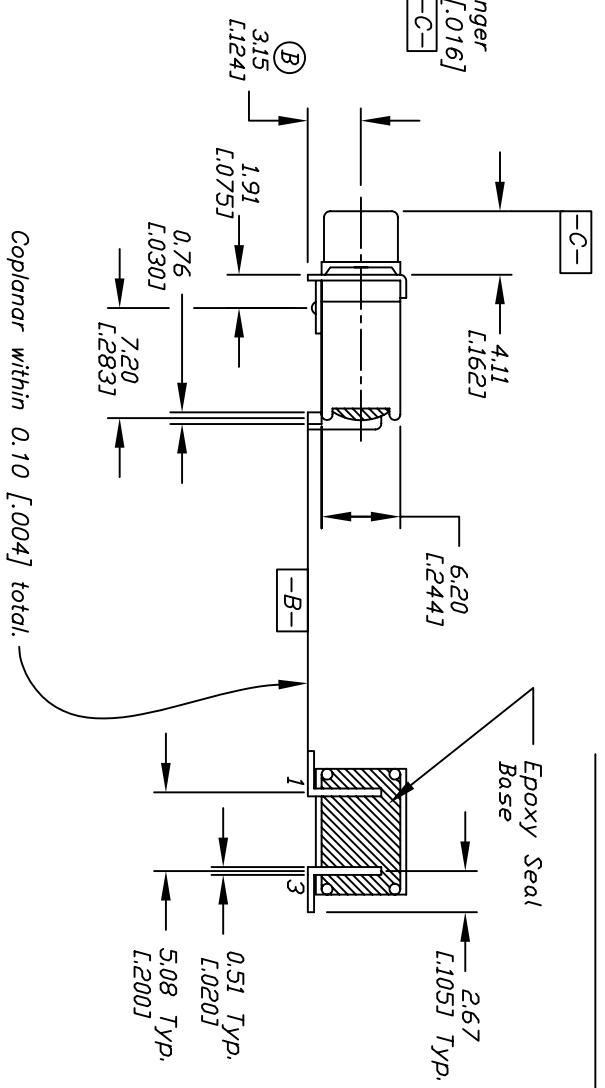
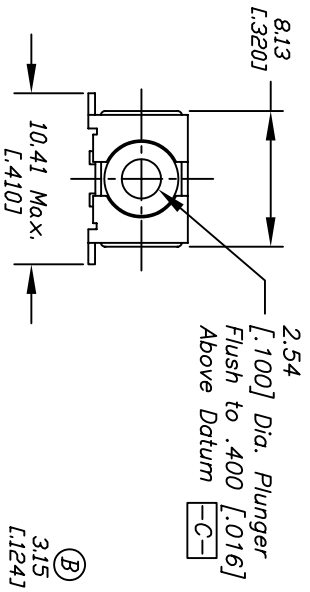
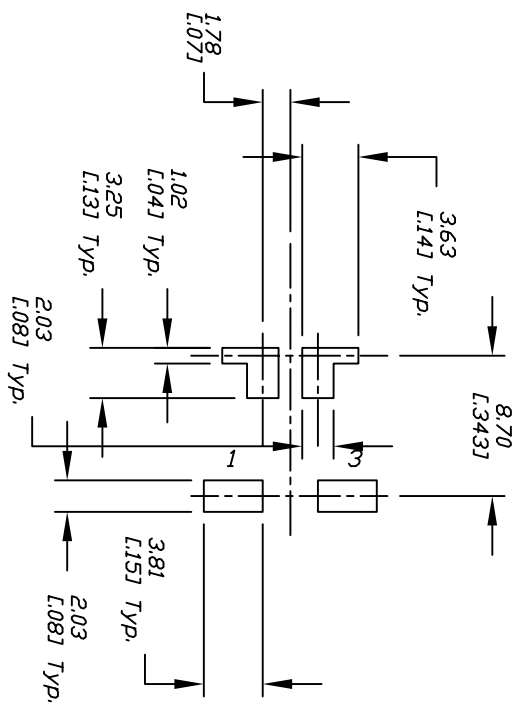


CIRCUIT: SPST  
CONTACT CONFIGURATION

DFE (DIN)

( ) = Momentary

1. ALL DIMENSIONS IN MM [INCH]
2. GENERAL TOLERANCE: 0.0=±0.4  
0.00=±0.25
3. TERM. NOS. FOR REF. ONLY
4. CONTACT RATING: 0.4 VA max. @20 VAC or DC max.
5. FIXED TERMINAL & MOVING CONTACT: Cu alloy w/Au plate over Ni plate.
6. ELECTRICAL LIFE: 50,000 make-and-break cycle at full load.
7. DIELECTRIC STRENGTH: 1,000 V RMS @sea level.
8. OPERATING TEMP.: -30°C to 85°C
9. 2002/95/EC (ROHS) COMPLIANT



F	15680	DIM FROM 5.60 TO 4.11	1/13/06	PH
E	15426	DIMS FROM 3.43, 4.11, 5.08, 9.07	10/21/05	PH
D	15289	CHANGED FLUSH .400 FROM .254	9/16/05	PH
C	15193	CHANGE DIM. FROM 7.62 TO 7.20	8/22/05	PH
B	11201	ADD DIMENSION	1/26/01	CJB
A	10453	RELEASED FOR PRODUCTION	12/3/99	MM
REV.	ECN No.	DESCRIPTION	DATE	CHKD

TITLE				
800B WSP-9 SM6 R E (Flush Actuator)				
<b>E-SWITCH®</b>				
SCALE	DATE	DR	DWG	REV
2:1	12/3/99	MM	T833018	F

THE INFORMATION CONTAINED IN THIS DOCUMENT IS PROPRIETARY TO E-SWITCH AND IS NOT TO BE COPIED OR TRANSFERRED